

PVMK Manual Operation Right Angle Isolation Valves



The PVMK is a quick acting, bellows sealed, right-angled lever operated valve and is available with either an Aluminium or stainless steel body. The lever, connected to a self-lubricating plastic cam-piston, actuates the valve stem and valve plate through PTFE bearings. The valve plate 'O' ring groove is vented to prevent gas bursts. The valves are designed to operate down to 10^{-9} mbar / 8×10^{-10} Torr and up to a pressure of 2100 mbar / 1575 Torr (30 psi).



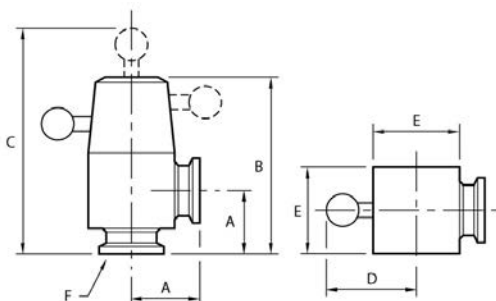
Technical Data

Construction material		
Body	HE30TF grade aluminium	
Bellows	AISI 316L stainless steel	
'O' ring	Fluoroelastomer	
Leak rate	$< 10^{-9}$ mbar ls ⁻¹ / $< 7.5 \times 10^{-10}$ Torr ls ⁻¹	
Operating pressure range	10^{-9} - 2100 mbar / 8×10^{-10} - 1575 Torr (30 psi)	
Molecular conductance		
PV10MK	3 ls ⁻¹	
PV16MK	4 ls ⁻¹	
PV25MK	10 ls ⁻¹	
PV40MK	38 ls ⁻¹	
PV50MK	50 ls ⁻¹	
Maximum baking temperature	100 °C	
Reliability (MTTF)	100000 operations	
Weight	Aluminium	Stainless Steel
PV10MK	170 g / 6 oz	-
PV16MK	180 g / 6.3 oz	500 g / 17.5 oz
PV25MK	490 g / 17.1 oz	1050 g / 36.8 oz
PV40MK	1400 g / 49 oz	3300 g / 116 oz
PV50MK	-	3800 g / 133 oz

Ordering Information

Product Description	Order No.
PV16MKA Right Angle, Aluminum, NW16	C31205000
PV16MKS Right Angle, Stainless Steel, NW16	C31215000
PV25MKA Right Angle, Aluminum, NW25	C31305000
PV25MKS Right Angle, Stainless Steel, NW25	C31315000
PV40MKA Right Angle, Aluminum, NW40	C31405000
PV40MKS Right Angle, Stainless Steel, NW40	C31415000
PV50MKS Right Angle, Stainless Steel, NW50	C31515000
PV10MKA Right Angle, Aluminum, NW10	C31105000
Accessories & Spares	Order No.
PV10/16MK O-Ring Kit	C41101800
PV25MK O-Ring kit	C41301810
PV40MK O-Ring kit	C41401800
PV50MK O-Ring kit	C41501800
PV10/16MK Major overhaul kit	C31105826
PV25MK Major overhaul kit	C31305826
PV40MK Major Overhaul kit	C31405826
PV50MK Major overhaul kit	C31515826
Valve Body PV10KA	C41101816
Valve body PV16KA	C41201816
Valve Body PV16KS	C41602801
Valve Body PV25KA	C41301816
Valve Body PV25KS	C41622801
Valve Body PV40KS	C41642801
Valve Body PV50KS	C41662801

Dimensions



	A	B	C	D	E	F
PV10MK	30	76.5	105	38	38	NW10
PV16MK	40	85.6	114	38	38	NW16
PV25MK	50	120	149	51	51	NW25
PV40MK	65	169	222	86	77	NW40
PV50MK	70	186	239	86	89	NW50

IPVMK Manual Operation In-line Isolation Valves



The IPVMK is a quick acting, bellows sealed, right-angled lever operated valve and is available with either an Aluminium or stainless steel body. The lever, connected to a self-lubricating plastic cam-piston, actuates the valve stem and valve plate through PTFE bearings. The valve plate O-ring groove is vented to prevent gas bursts. The valves are designed to operate down to 10^{-9} mbar / 8×10^{-10} Torr and up to a pressure of 2100 mbar / 1575 Torr (30 psi).

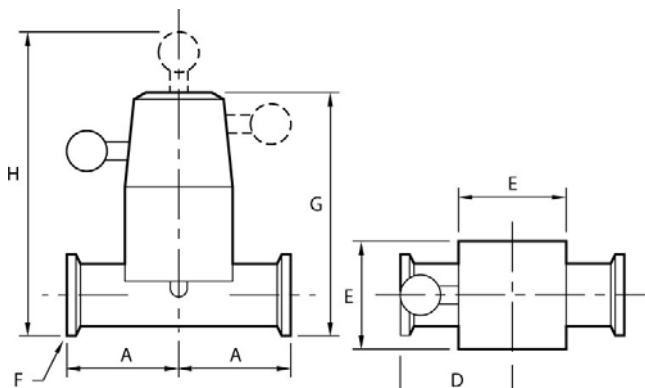
Technical Data

Construction material		
Body	HE30TF grade aluminium or AISI304 grade stainless steel	
Bellows	AISI 316L stainless steel	
O-ring	Fluoroelastomer	
Leak rate	$< 10^{-9}$ mbar $l s^{-1}$ / $< 7.5 \times 10^{-10}$ Torr $l s^{-1}$	
Operating pressure range	10^{-9} - 2100 mbar / 8×10^{-10} - 1575 Torr (30 psi)	
Molecular conductance		
IPV16MK	2 $l s^{-1}$	
IPV25MK	6 $l s^{-1}$	
IPV40MK	22 $l s^{-1}$	
Maximum baking temperature	100 °C	
Reliability (MTTF)	100000 operations	
Weight		
	Aluminium	Stainless Steel
IPV16MK	180g / 6.3oz	500g / 17.5oz
IPV25MK	490g / 17.1oz	1050g / 36.8oz
IPV40MK	1400g / 49oz	3300g / 116oz

Ordering Information

Product Description	Order No.
IPV16MKA, Aluminium, NW16	C41218000
IPV16MKS, Stainless Steel, NW16	C41219000
IPV25MKA, Aluminium, NW25	C41321000
IPV25MKS, Stainless Steel, NW25	C41322000
IPV40MKS, Stainless Steel, NW40	C41421000
IPV40MKA, Aluminium, NW40	C41420000
Accessories & Spares	Order No.
PV10/16MK O-Ring Kit	C41101800
PV25MK O-Ring kit	C41301810
PV40MK O-Ring kit	C41401800
PV10/16MK Major overhaul kit	C31105826
PV25MK Major overhaul kit	C31305826
PV40MK Major Overhaul kit	C31405826
Valve body IPV16KA	C41201802
Valve Body IPV16KS	C41602811
Valve Body IPV25KA	C41621802
Valve Body IPV25KS	C41622811
Valve Body IPV40KA	C41641802
Valve Body IPV40KS	C41642811

Dimensions



	A	B	C	D	E	F	G	H
IPV10MK	30	76.5	105	38	38	NW10	-	-
IPV16MK	40	85.6	114	38	38	NW16	70	99
IPV25MK	50	120	149	51	51	NW25	112	141
IPV40MK	65	169	222	86	77	NW40	155	208
IPV50MK	70	186	239	86	89	NW50	-	-