

VALVE MECHANISM AND PUMP-OUT PORT SYSTEM, SERIES 23.0

For infrequently pumped vacuum vessels or gas isolation.



Valve mechanism



Pump-out port

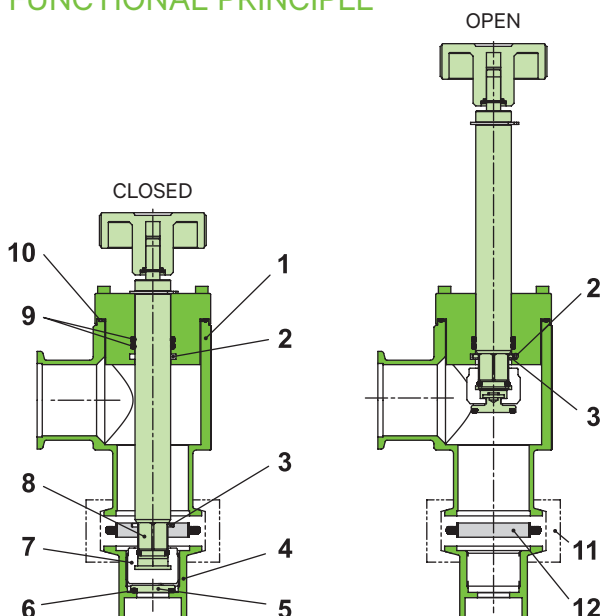
Protects against unintentional opening

One valve mechanism (lock) for multiple pump-out ports

MAIN FEATURES

Size	DN 16 – 40 mm (5/8" – 1½")
Actuator	valve mechanism with self-locking handwheel
Body material	valve mechanism: aluminum pump-out port: stainless steel
Feedthrough	shaft feedthrough
Standard flanges	ISO-KF

FUNCTIONAL PRINCIPLE



- 1 Valve mechanism
- 2 Retaining device
- 3 Retaining pin on shaft
- 4 Pump-out port
- 5 Plate
- 6 Plate seal
- 7 Isolating plug
- 8 Plug-in shaft head / hexagon
- 9 Feedthrough seal
- 10 Bonnet seal
- 11 Clamping ring
- 12 Centering ring with O-ring

The illustration shows a valve mechanism and pump-out port system with clamping ring (11) and centering ring (12). Clamping ring and centering ring are not part of the system.

TECHNICAL DATA

		Valve mechanism	Pump-out port
Leak rate		1·10 ⁻⁸ mbar ls ⁻¹	< 1·10 ⁻⁹ mbar ls ⁻¹
Pressure range		1·10 ⁻⁸ mbar to 1 bar (abs)	1·10 ⁻⁸ mbar to 1 bar (abs)
Temperature	Valve body	≤ 150 °C	-
	Handwheel	≤ 50 °C	-
Material	Body	EN AW-6060 (3.3206)	AISI 304 (1.4301)
	Shaft	AISI 304 (1.4301)	-
	Plate	-	AISI 304 (1.4301)
Seal	Bonnet, feedthrough, plate	FKM (Viton®)	FKM (Viton®)
Mounting position		any	any
Stroke	DN 16, 25	75 mm (2.95")	-
	DN 40	107 mm (4.21")	-
Unobstructed flow diameter	DN 16	-	2.5 mm (0.10")
	DN 25	-	8.0 mm (0.31")
	DN 40	-	18.0 mm (0.71")
Weight	DN 16	0.35 kg (0.77 lbs)	0.05 kg (0.11 lbs)
	DN 25	1 kg (2.2 lbs)	0.10 kg (0.22 lbs)
	DN 40	1.2 kg (2.65 lbs)	0.25 kg (0.55 lbs)

Further technical data on request.

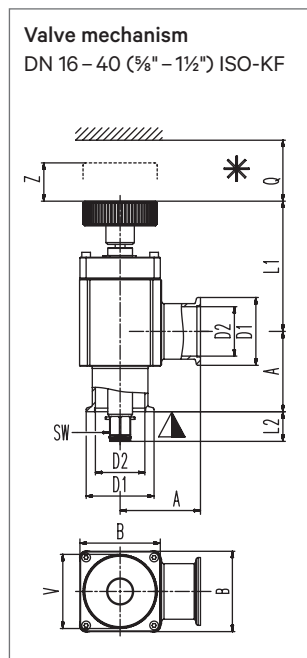
ACCESSORIES

Flange connections for installation of the valve: see series 31

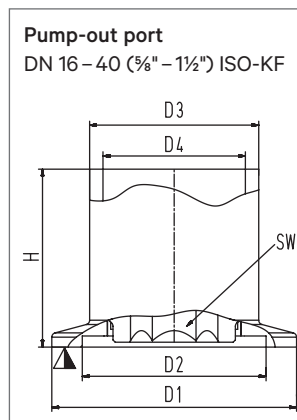
ORDERING INFORMATION

ISO-KF	DN		Ordering numbers	
	mm	inch	valve mechanism with self-locking handwheel	pump-out port
	16	5/8	23024-KA01	23024-KEPS
25	1	23028-KA01	23028-KEPS	
40	1 1/2	23032-KA01	23032-KEPS	

DIMENSIONS



DN	mm	16	25	40
	inch	5/8	1	1 1/2
A	mm	40	50	65
	inch	1.57	1.97	2.56
B	mm	40	48	65
	inch	1.57	1.89	2.56
D1	mm	29.90	39.90	54.90
	inch	1.17	1.57	2.16
D2	mm	16	25	40
	inch	0.63	0.98	1.57
L1	mm	63.80	83.10	105.40
	inch	2.51	3.27	4.15
L2	mm	19.50	21	24
	inch	0.77	0.83	0.94
Q	mm	130	130	130
	inch	5.12	5.12	5.12
SW	mm	5	8	17
	inch	0.20	0.31	0.67
V	mm	40	40	60
	inch	1.57	1.57	2.36
Z	mm	75	75	107
	inch	2.95	2.95	4.21



DN	mm	16	25	40
	inch	5/8	1	1 1/2
D1	mm	30	40	55
	inch	1.18	1.57	2.17
D2	mm	17.20	26.20	41.20
	inch	0.68	1.03	1.62
D3	mm	16	25	38
	inch	0.63	0.98	1.50
D4	mm	10	22	32
	inch	0.39	0.87	1.26
H	mm	25.50	31.20	40
	inch	1	1.23	1.57
SW	mm	5	8	17
	inch	0.20	0.31	0.67

▼ Valve seat side
* Required for dismantling