

## ESDP12 SCROLL PUMP



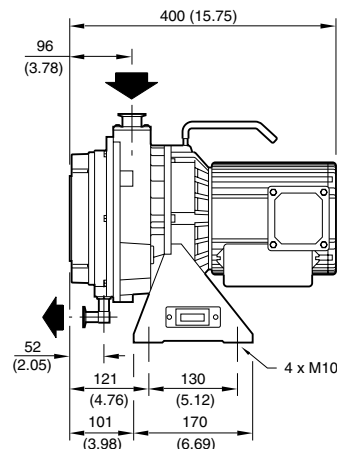
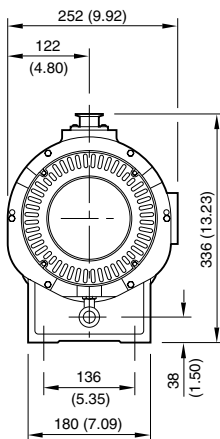
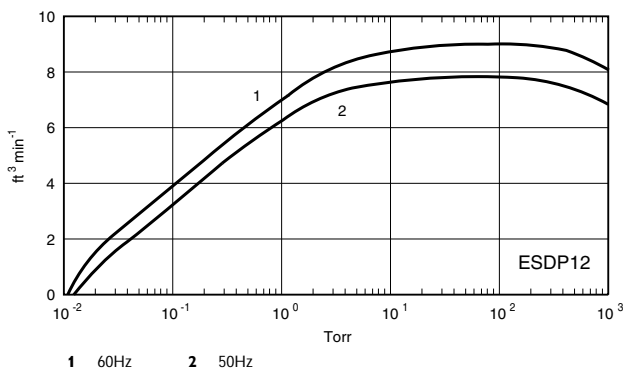
The ESDP12 is not suitable for applications where vapor pumping is required.

### APPLICATIONS

- Clean and dry turbomolecular pump backing
- High energy physics
- Leak detection

### TECHNICAL DATA

Displacement (swept volume)	
50 Hz	15 m <sup>3</sup> h <sup>-1</sup> / 8.8 ft <sup>3</sup> min <sup>-1</sup>
60 Hz	18 m <sup>3</sup> h <sup>-1</sup> / 10.6 ft <sup>3</sup> min <sup>-1</sup>
Peak pumping speed	
50 Hz	12.5 m <sup>3</sup> h <sup>-1</sup> / 7.3 ft <sup>3</sup> min <sup>-1</sup>
60 Hz	15 m <sup>3</sup> h <sup>-1</sup> / 8.8 ft <sup>3</sup> min <sup>-1</sup>
Ultimate vacuum (total pressure)	
1.6 × 10 <sup>-2</sup> mbar / 1 × 10 <sup>-2</sup> Torr	
Inlet connection	
NW25	
Outlet connection	
NW16	
Motor power	
0.4 kW	
Electrical supply, 1-phase	
50 Hz	200 / 230 V
60 Hz	110 / 115 V
Enclosure rating	
IP44	
Operating temperature range	
5 - 40 °C / 41-104 °F	
Weight	
25 kg / 55 lbs	
Noise level at ultimate (at 1 metre)	
58 dB(A)	
Vibration	
1.5 mms <sup>-1</sup>	
Leak tightness (static)	
10 <sup>-4</sup> mbar l s <sup>-1</sup>	



### ORDERING INFORMATION

PRODUCT DESCRIPTION	ORDERING NUMBER
ESDP12B	A710-02-909
SPARES	ORDERING NUMBER
Tip seals kit	A710-02-026
Minor service kit	A710-02-820
Major service kit	A710-02-800
Major service tool kit	A710-02-025

