

CONTROLLER FOR FAST CLOSING SYSTEMS, SERIES 75/77

For fast closing and controlled opening of the valves and shutters Series 75/77, for fast processing of the sensor signal and for the control of further isolation valves.



TECHNICAL DATA

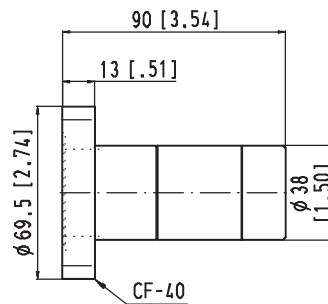
Controller VF-2 (basic device)	<ul style="list-style-type: none"> - 19" rack insert with power supply - Storage spaces for max. 10 modules - Mains voltage: 100 – 240 V ±10%, 50/60 Hz, max. 150 VA - Key switch for LOCAL, LOCKED, REMOTE - Ambient temperature: 0– 50 °C - Dimensions: <ul style="list-style-type: none"> · 19" rack insert, 3 height units · 445 × 132.5 × 300 mm / 17.5" × 5.2" × 11.8" (W × H × D) · Depth with plugs: 410 mm (16.1") - Weight: 11 kg (24 lbs) 		
Modules for controller VF-2	<table border="0"> <tr> <td style="vertical-align: top; padding-right: 10px;">CONTROL</td> <td> <ul style="list-style-type: none"> - Storage: space for 1 module required - System control module for max. 6 sensors and 4 fast closing valves /shutters - External trigger - 8-pole male connector for REMOTE control - LED display READY, EXTERNAL TRIGGER - Push button RESET </td> </tr> </table>	CONTROL	<ul style="list-style-type: none"> - Storage: space for 1 module required - System control module for max. 6 sensors and 4 fast closing valves /shutters - External trigger - 8-pole male connector for REMOTE control - LED display READY, EXTERNAL TRIGGER - Push button RESET
CONTROL	<ul style="list-style-type: none"> - Storage: space for 1 module required - System control module for max. 6 sensors and 4 fast closing valves /shutters - External trigger - 8-pole male connector for REMOTE control - LED display READY, EXTERNAL TRIGGER - Push button RESET 		
	<table border="0"> <tr> <td style="vertical-align: top; padding-right: 10px;">FV SENSOR</td> <td> <ul style="list-style-type: none"> - Storage: space for 1 module required - Connection of a fine vacuum sensor by a triaxial connector (LEMO) - Sensor voltage: 3.5 kV - LED display READY, INRUSH, EXTERNAL SIGNAL, INTERLOCK - 8-pole male connector for REMOTE control </td> </tr> </table>	FV SENSOR	<ul style="list-style-type: none"> - Storage: space for 1 module required - Connection of a fine vacuum sensor by a triaxial connector (LEMO) - Sensor voltage: 3.5 kV - LED display READY, INRUSH, EXTERNAL SIGNAL, INTERLOCK - 8-pole male connector for REMOTE control
FV SENSOR	<ul style="list-style-type: none"> - Storage: space for 1 module required - Connection of a fine vacuum sensor by a triaxial connector (LEMO) - Sensor voltage: 3.5 kV - LED display READY, INRUSH, EXTERNAL SIGNAL, INTERLOCK - 8-pole male connector for REMOTE control 		
	<table border="0"> <tr> <td style="vertical-align: top; padding-right: 10px;">HV SENSOR</td> <td> <ul style="list-style-type: none"> - Storage: space for 2 modules required - Connection of a high vacuum sensor by a triaxial connector (LEMO) - Sensor voltage: 3.5 kV - LED display for pressure - Trigger pressure adjustable between $2 \cdot 10^{-8}$ and $8 \cdot 10^{-4}$ mbar - Trigger time adjustable between 1 and 7 msec - 8-pole male connector for REMOTE control - 4-pole female connector - Analog pressure signal </td> </tr> </table>	HV SENSOR	<ul style="list-style-type: none"> - Storage: space for 2 modules required - Connection of a high vacuum sensor by a triaxial connector (LEMO) - Sensor voltage: 3.5 kV - LED display for pressure - Trigger pressure adjustable between $2 \cdot 10^{-8}$ and $8 \cdot 10^{-4}$ mbar - Trigger time adjustable between 1 and 7 msec - 8-pole male connector for REMOTE control - 4-pole female connector - Analog pressure signal
HV SENSOR	<ul style="list-style-type: none"> - Storage: space for 2 modules required - Connection of a high vacuum sensor by a triaxial connector (LEMO) - Sensor voltage: 3.5 kV - LED display for pressure - Trigger pressure adjustable between $2 \cdot 10^{-8}$ and $8 \cdot 10^{-4}$ mbar - Trigger time adjustable between 1 and 7 msec - 8-pole male connector for REMOTE control - 4-pole female connector - Analog pressure signal 		
	<table border="0"> <tr> <td style="vertical-align: top; padding-right: 10px;">VALVE</td> <td> <ul style="list-style-type: none"> - Storage: space for 1 module required - Connection of a fast closing valve or shutter - LED display READY, TRIGGERED, READY TO OPEN, INTERLOCK - Push buttons OPEN, CLOSE, INTERLOCK - 19-pole female connector for connecting the valve /shutter - 12-pole male connector for REMOTE control </td> </tr> </table>	VALVE	<ul style="list-style-type: none"> - Storage: space for 1 module required - Connection of a fast closing valve or shutter - LED display READY, TRIGGERED, READY TO OPEN, INTERLOCK - Push buttons OPEN, CLOSE, INTERLOCK - 19-pole female connector for connecting the valve /shutter - 12-pole male connector for REMOTE control
VALVE	<ul style="list-style-type: none"> - Storage: space for 1 module required - Connection of a fast closing valve or shutter - LED display READY, TRIGGERED, READY TO OPEN, INTERLOCK - Push buttons OPEN, CLOSE, INTERLOCK - 19-pole female connector for connecting the valve /shutter - 12-pole male connector for REMOTE control 		

1-GATE	<ul style="list-style-type: none"> - Storage: space for 1 module required - Connection of 1 isolation valve - LED display READY - Push buttons OPEN, CLOSE - 19-pole female connector for connecting the isolation valve - 12-pole male connector for REMOTE control
2-GATE	<ul style="list-style-type: none"> - Storage: space for 1 module required - Connection of 2 isolation valves - LED display READY for each isolation valve - Push buttons OPEN, CLOSE for each isolation valve - 12-pole female connector (2x) for connecting the isolation valves - 12-pole male connector for REMOTE control
LINK	<ul style="list-style-type: none"> - Storage: space for 1 module per rack required - To link two controllers VF-2 if the 10 storage spaces of one controller are insufficient

ACCESSORIES

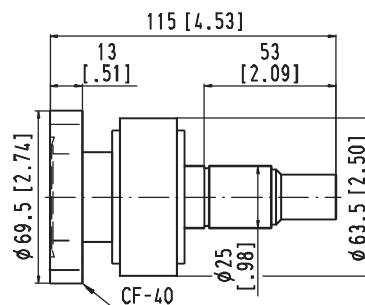
- Cable
 - Sensor – SENSOR module: max. 300 m, triaxial cable, 3.5 mm²
 - Valve / shutter – VALVE module: max. 150 m, 12-pole cable, 0.75 mm²
 - Isolation valve – GATE module: max. 200 m, 7-pole cable, 0.75 mm²
- Ordering No.
770CS-99LX
770CV-79LX
770CV-89LX
X = Length: to be specified

- Fine vacuum sensor (FV)
Ordering No. 770SF-99NN
glow discharge



Trigger pressure: approx. 10⁻² mbar
 Response time: approx. 1 ms
 Radiation resistance: 10⁹ Gy (10¹⁰ rad)
 Flange: CF-F 40
 Weight: approx. 0.6 kg (1.32 lbs)

- High vacuum sensor (HV)
Ordering No. 770SH-99NN
cold cathode



Trigger pressure: adjustable from 10⁻⁸ to 10⁻³ mbar
 Response time: 2 ms (air inrush 1 bar)
 Radiation resistance: 10⁷ Gy (10⁹ rad)
 Flange: CF-F 40
 Weight: approx. 1.1 kg (2.43 lbs)

ORDERING INFORMATION

Controller VF-2 combined with various modules
 Ordering numbers on request